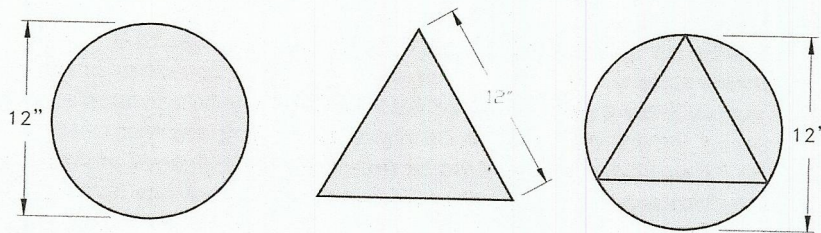


GENERAL REQUIREMENTS
SANITARY FACILITIES



WALL-SIGNAGE (TYP.)



DOOR MOUNTED SIGNAGE (TYP.)

NOTE: PICTOGRAMS AND/OR LETTERING ARE NOT REQUIRED ON DOOR-MOUNTED SIGNAGE.

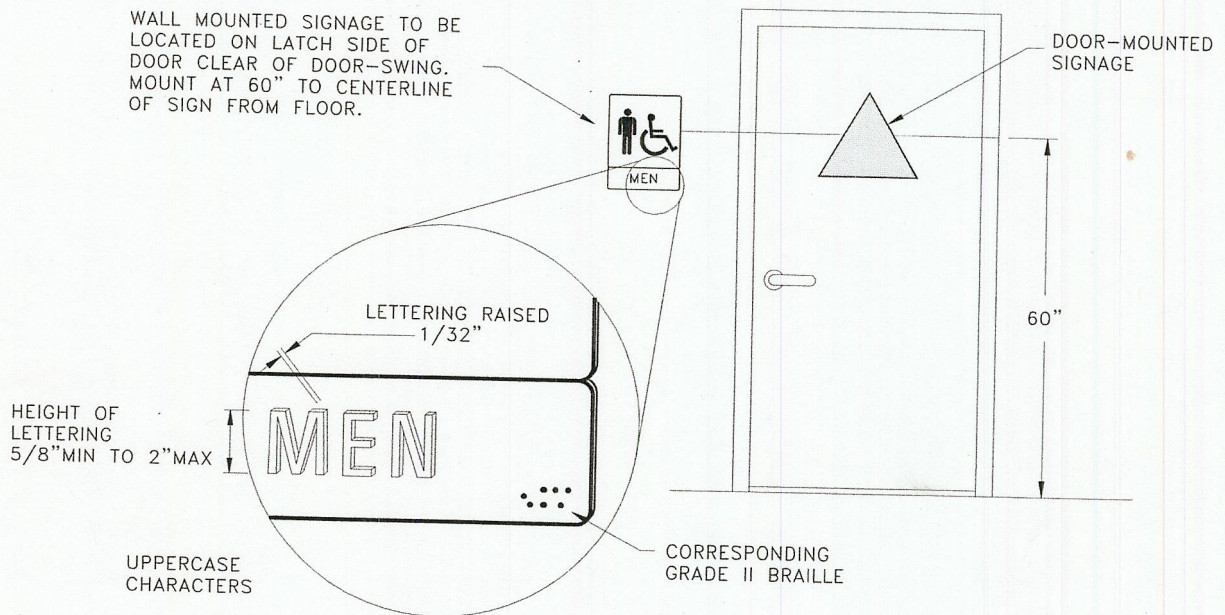
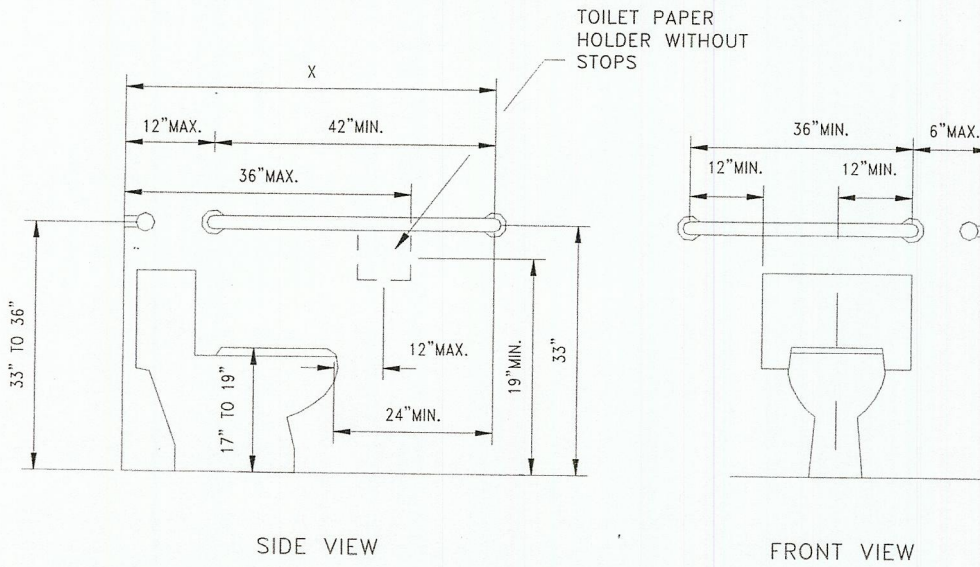


Fig.82

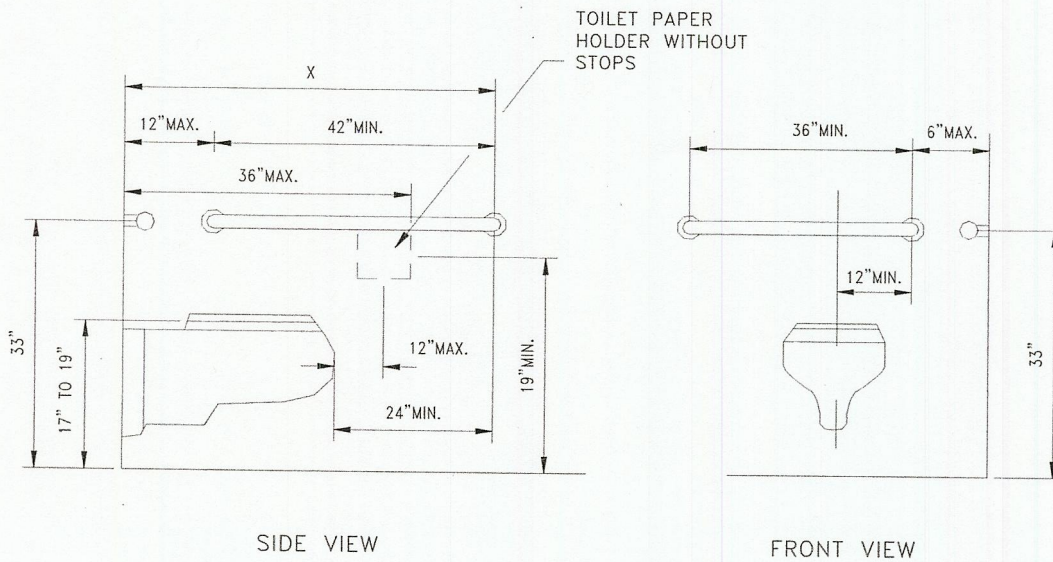
IDENTIFICATION SYMBOLS FOR
SANITARY FACILITIES

**GENERAL REQUIREMENTS
SANITARY FACILITIES**



FLOOR-MOUNTED WATER CLOSETS

X=52" MINIMUM WHEN WATER CLOSETS ARE IN STALLS
 X=54" MINIMUM WHEN WATER CLOSETS ARE NOT IN STALLS
 (SUCH AS IN SINGLE ACCOMMODATION ROOMS OR
 OPEN TOILETING SITUATIONS)

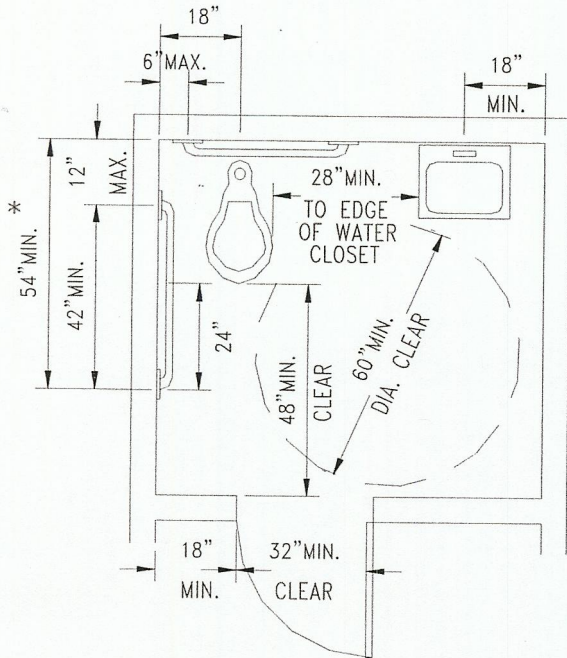


WALL-MOUNTED WATER CLOSETS

Fig.85

**WALL-/FLOOR-MOUNTED WATER
CLOSET DETAILS**

GENERAL REQUIREMENTS
SANITARY FACILITIES



NOTE: REGARDLESS OF STALL CONFIGURATION, A 48" LONG MINIMUM CLEARANCE FLOOR SPACE SHALL BE PROVIDED IN FRONT OF THE WATER CLOSET.

NOTE: INTERIOR DIMENSIONS OF SINGLE ACCOMMODATION TOILET ROOMS SHALL INCLUDE A CLEAR FLOOR SPACE OF AT LEAST 60" IN DIAMETER OR A T-SHAPED CLEAR SPACE. NO DOOR MAY ENCR OACH INTO THIS REQUIRED CLEAR SPACE BY MORE THAN 12".

* - SIDE GRAB BARS IN SINGLE ACCOMMODATION TOILET ROOMS MUST BE INSTALLED SUCH THAT THE FRONT END OF THE BAR IS LOCATED A MINIMUM OF 54" FROM THE BACK WALL.

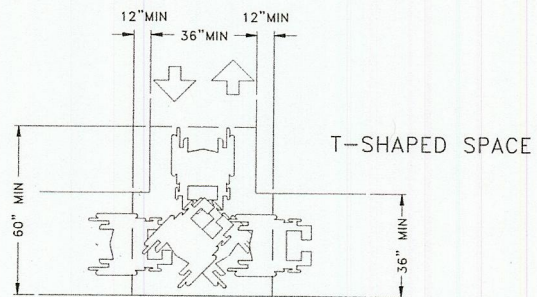
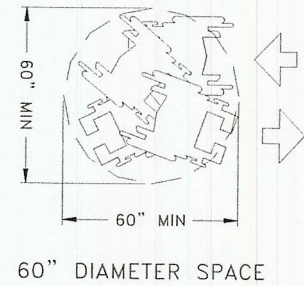
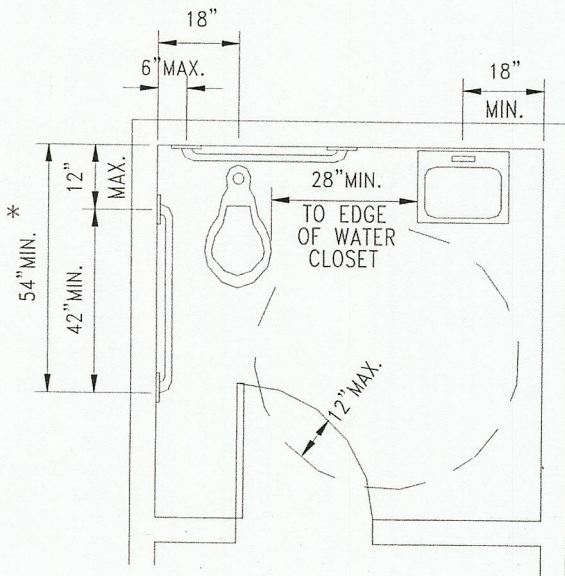
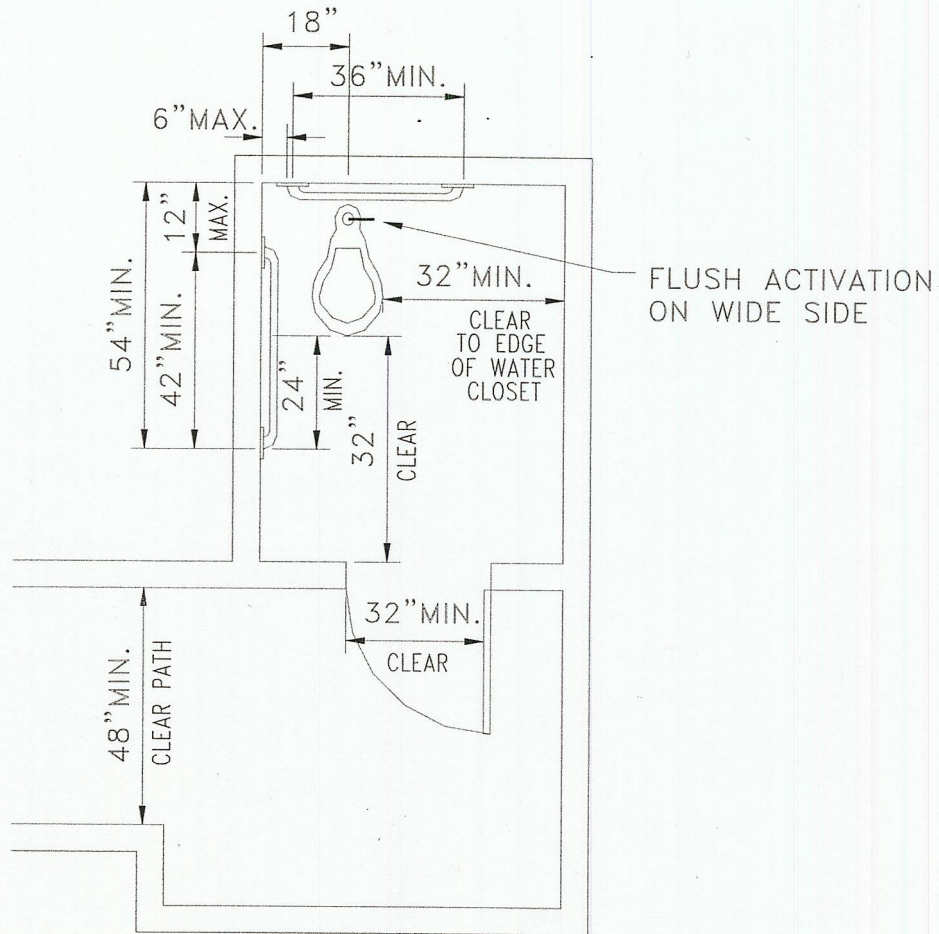


Fig.89

SINGLE ACCOMMODATION TOILET

GENERAL REQUIREMENTS
SANITARY FACILITIES (Alternate Toilet stall design)



EQUIVALENT FACILITATION FOR
EXISTING BUILDINGS ONLY

ALTERATIONS

IN EXISTING BUILDINGS OR FACILITIES, WHEN THE ENFORCING AGENCY DETERMINES THAT COMPLIANCE WITH THE REQUIREMENTS FOR A STANDARD SIDE-TRANSFER TOILET STALL WOULD CREATE AN UNREASONABLE HARDSHIP, THE ALTERNATE TOILET STALL DESIGN SHOWN HEREON MAY BE UTILIZED TO PROVIDE EQUIVALENT FACILITATION.

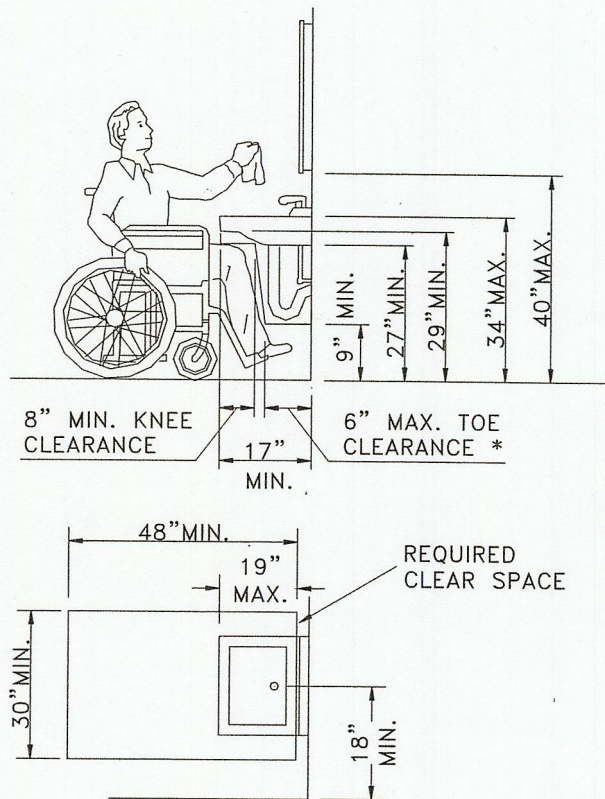
Fig.92

**ALTERNATE LATERAL OR SIDE-TRANSFER
TOILET STALL DESIGN**

GENERAL REQUIREMENTS
SANITARY FACILITIES

maximum allowed 34" AFF. This situation is of particular importance in alterations, as many older model lavatories simply cannot provide for both maximum mounting height and required knee clearance. It is also important to understand that the drain piping cannot encroach into the required knee clearance. The fact that an individual's knees may be able to slip past the piping on either side is of no consequence; the minimum required clearances must be provided. To prevent possible problems, it is highly recommended that plan drawings specify lavatory models that provide a full 8" clearance from the front of the unit to any piping, and additionally provides for a maximum bowl depth of 6-1/2".

The required clearances between lavatories and sinks are different and should not be confused. Although California's accessibility guidelines do not presently contain specific guidelines for sinks (other than for the faucet controls and operating mechanisms), the ADAAG does. Lavatories require minimum knee clearances of 30" wide by 27" high by 8" deep; sinks require knee clearances that are a minimum of 30" wide by 27" high, however the depth of this clearance must maintain an absolute distance of 19" from the front of the sink. In addition, federal guidelines restrict each sink to a maximum depth of 6-1/2". See Checklist Section "SINKS" for applicable requirements.



*NOTE: IT IS ALLOWED TO HAVE TOE CLEARANCE THAT EXTENDS FURTHER THAN 6" UNDER THE LAVATORY, HOWEVER THE MEASUREMENT OF THE REQUIRED 30" x 48" WHEELCHAIR CLEAR FLOOR SPACE MAY ONLY OVERLAP THIS TOE CLEARANCE BY A MAXIMUM OF 6".

Fig.93

LAVATORIES

50. ACCESSORIES IN SANITARY FACILITIES

- _____ A. Minimum 30" x 48" clear floor or ground space is provided to allow forward or parallel approach to accessories. **1118B.4.1 4.22.7**
- _____ B. One full unobstructed side of the clear floor or ground space adjoins or overlaps an accessible route or adjoins another wheelchair clear floor space. **1118B.4.2 4.2.4.2**
- _____ C. Mirror(s) is mounted with the bottom edge no higher than 40" from the floor. **1115B.9.1.2 4.19.6 Fig. 97**
- _____ D. Operable parts (including coin slots) of all fixtures or accessories are located a maximum of 40" above floor (i.e., soap dispensers, towels, toilet seat covers, auto-dryers, sanitary napkin dispensers, waste receptacles, etc.). **1115B.9.2 4.23.7 Fig. 97**
- _____ E. Controls and operating mechanisms are operable with one hand and do not require tight grasping, pinching, or twisting of the wrist. **1117B.6.4 4.27.4**
- _____ F. The force required to activate controls is 5 lbf. maximum. **1117B.6.4 4.27.4**
- _____ G. Coat hooks and shelving are located within appropriate reach ranges (48" max. above floor recommended). **1118B.4.1 thru B.6 4.2.5**
- _____ H. If medicine cabinets are provided, at least one has a usable shelf no higher than 44" above floor. **4.23.9**

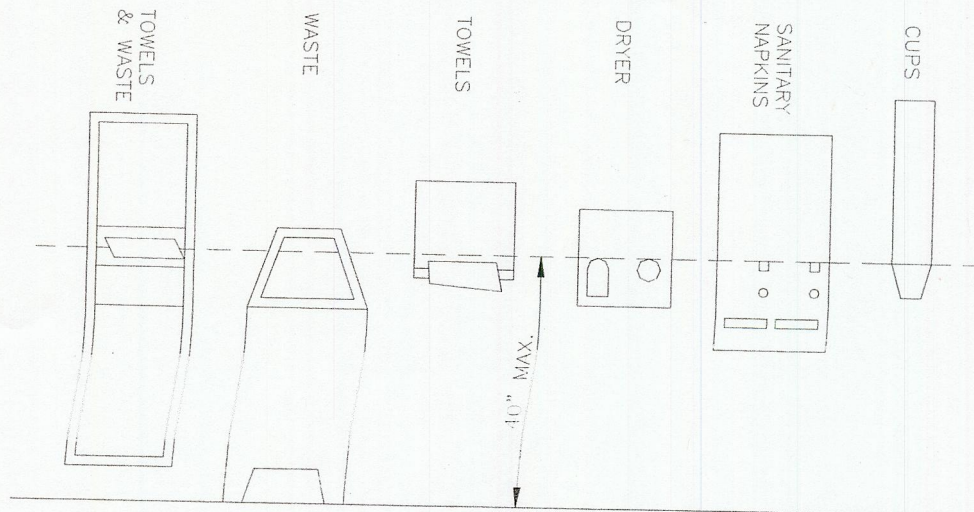


Fig.97

TOILET ROOM ACCESSORIES